

Sample 656-011124-103

Jedi - Exotics

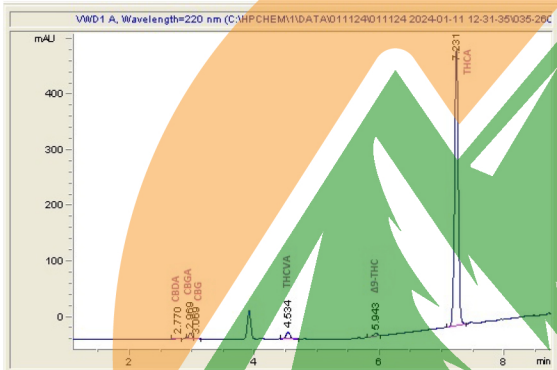
Sample Submitted: 01-11-2024; Report Date: 01-19-2024

### Jedi - Exotics

Plant Material: Infused Flower

#### Chromatogram

#### Cannabinoid Profile



Cannabinoid	Value
CBDA	0.065
CBGA	0.382
CBG	0.097
THCVa	0.312
Delta-9-THC	0.279
THCA	33.806

#### Cannabinoid Profile by HPLC

0.28%

Delta-9-THC

0.00%

CBD

34.94%

Total Cannabinoids

Cannabinoid	% wt	mg/g
CBDA	0.065	0.65
CBGA	0.382	3.82
CBG	0.097	0.97
THCVa	0.312	3.12
Delta-9-THC	0.279	2.79
THCA	33.81	338.06
<b>Total Cannabinoids</b>	<b>34.94</b>	<b>349.4</b>
<b>Calculated Total THC</b>	<b>29.93</b>	<b>299.27</b>
<b>Calculated CBD Yield</b>	<b>0.06</b>	<b>0.57</b>
Calculated Total THC = Delta-9-THC + 0.877 * THCA		
Calculated Maximum CBD Yield = CBD + 0.877 * CBDA		

#### Marin Analytics, LLC

250 Bel Marin Keys Blvd, Suite D4  
Novato, CA 94949

833-321-TEST / info@marinanalytics.com



Mike Clemmons  
Lab Manager